

Roscommon County Road Commission

James Porath, Commissioner
Justin Wykoff, Commissioner
Clint Stauffer, Commissioner
Brian Vaughn, Commissioner
Scott Eckstorm, Commissioner

820 E. West Branch Road
Prudenville, MI 48651

Roger Saxton, Manager
Phone:(989)366-0333
Fax:(989)366-0299
Website: www.roscommoncrc.com
E-mail: rcrc@roscommoncrc.com

NOTICE TO BIDDERS

The Roscommon County Road Commission will receive sealed bids until 2:30 p.m. on June 8, 2023. Bids will be opened for tabulation and review at the Roscommon County Road Commission on June 8, 2023 beginning at 2:30 p.m. The Project will be awarded at the Roscommon County Road Commission's regular board meeting on June 8, 2023, beginning at 7:00 p.m. Our office is located at 820 E. West Branch Road, Prudenville, MI 48651.

Roscommon County Video & Cleanout of Storm Sewers #2

Specifications may be obtained by contacting the Roscommon County Road Commission at the above address, by calling (989)-366-0333 ext.1003, emailing Belangern@roscommoncrc.com or by going to www.roscommoncrc.com. Please check the website for any inquiries pertaining to this bid document.

Submit bids in a sealed envelope that is clearly marked with the words "**Roscommon County Video & Cleanout of Storm Sewers #2**".

The Roscommon County Road Commission reserves the right to reject any or all bids, to waive irregularities in any bid, and to accept the bid deemed to be in the best interest of Roscommon County Road Commission.

ROSCOMMON COUNTY BOARD
OF ROAD COMMISSIONERS

Jim Porath, Commissioner
Justin Wykoff, Commissioner
Clint Stauffer, Commissioner
Brian Vaughn, Commissioner
Scott Eckstorm, Commissioner

**Roscommon County Road Commission
General Specification
For
Roscommon County Video & Cleanout of Storm Sewers #2**

General

The Roscommon County Road Commission is accepting sealed bids for the cleaning and video inspection of storm sewers:

- M-55, Houghton Lake, Between Northland Area Credit Union(Approx Sta 1541+00) and M-18 North(approx. Sta 1660+00), M-18, Houghton Lake, Between Sweet Plum Ave(Approx Sta 40+00) and M-55(Approx Sta 50+00), Attachment A, **Completion by July 31, 2023**

The Roscommon County Road Commission Special Provision for Video Inspection of Storm Sewers, the Roscommon County Road Commission Special Provision for Storm Sewer Cleanout, and the MDOT 2020 Standard Specifications for Construction shall be followed.

- Work may begin after award of project.
- At the conclusion of the project, the Contractor will need to provide a log of the system clearly identifying for each segment (i.e. basin to basin); length, diameter of pipe, any issues noted, and a repair recommendation.
- Successful Contractor will be responsible for all traffic control.
- No work can be performed from July 1 to July 16.
- Attachment A is provided for reference only, more or less storm sewer may be found requiring cleanout & video.

Insurance requirements

The Roscommon County Road Commission requires that a "Certification of Insurance" be on file prior to allowing work within the right-of-way of any road under the jurisdiction of the Road Commission.

The certificate of insurance shall contain or include the following:

1. Board of County Road Commissioners and Roscommon County Road Commission and all employees named as addition insured to all coverage.
2. General liability coverage - \$1,000,000 each occurrence.
3. Automotive liability - \$1,000,000 each occurrence.
4. Worker's compensation – statutory limits.

M-55/M-18, Houghton Lake Bid Price \$ _____ Lump Sum

Company Name

Date

Address

Telephone

City, State & Zip

Fax

E-mail Address

Authorized Signature

Printed Name of Authorized Signer

ROSCOMMON COUNTY ROAD COMMISSION

SPECIAL PROVISION
FOR
STORM SEWER CLEANOUT

1 of 1

a. Description. This work consists of removing and collecting silt, solids, and other debris from existing storm sewers, catch basins, spillways, and end sections and disposing of all collected material in accordance with section 205 of the Standard Specifications for Construction.

As directed by the Engineer, storm sewer cleanout may be applied to entire lengths or to portions of the sewers shown on the plans. Portions of storm sewers will be designated if the length requiring cleaning is readily identifiable.

b. Materials. None specified.

c. Construction. The Contractor will provide traffic control in accordance with section 812 of the Standard Specifications for Construction.

Select a method which ensures removal of all silt, solids and other debris from the storm sewer, resulting in unrestricted flow. Minimize disturbance to the area and contain all removed material in a manner approved by the Engineer.

Repair any damage to the existing drainage system which results from the cleaning operation. Provide soil erosion and sedimentation control measures or restoration items that become necessary due to the method of cleaning selected.

d. Measurement and Payment. The completed work, as described, will be measured and paid for at the contract unit price using the following pay item:

Pay Item	Pay Unit
Storm Sewer Cleanout	Lump Sum

Storm Sewer Cleanout includes only storm sewers authorized by the Engineer for cleaning. All costs associated with soil erosion and sedimentation control measures, restoration items, and repair work are considered included in this pay item.

All costs associated with sewer cleanout necessitated by the Contractor's operations will be at no additional cost to the contract.

ROSCOMMON COUNTY ROAD COMMISSION

SPECIAL PROVISION
FOR
VIDEO INSPECTION OF STORM SEWERS

1 of 2

a. Description. This work consists of making a digital video (DVD) record and log of the physical and structural conditions of the existing storm sewers. Ensure the video is professional quality, in color, and provides a clear and accurate visual record of the pipe condition.

Conduct the inspection and furnish three copies of an external hard drive(SD Card)/DVD(s) and written log(s) to the Engineer by the date specified in the bid documents. Ensure any portion of the external hard drive(SD Card)/DVD(s) determined by the Engineer to be unacceptable for the documentation is reinspected. Reinspection may include recleaning of the storm sewers prior to video inspection as directed by the Engineer. All costs associated with the need to reinspect will be at no cost to the contract.

The Contractor is responsible for damage to the existing storm sewers caused by their operation. Costs to repair damage caused by the Contractor's operations, as identified by the Engineer during creation of the DVD(s) and log(s), will be at no cost to the contract.

b. Materials. None specified.

c. Video Inspection. The Contractor will provide traffic control in accordance with section 812 of the Standard Specifications for Construction.

Conduct video inspection in accordance with subsection 402.03.J of the Standard Specifications for Construction and as described herein. Ensure work is completed at a time approved by the Engineer to coincide with low flow rate periods prior to starting work. Provide the Engineer a minimum notice of at least 3 work days prior to starting work. Obtain approval from the Engineer for pumping, bypassing, and other methods of flow control prior to starting work.

Use video equipment specifically designed for sewer inspection and recording. Ensure video equipment is capable of pan, tilt, and zoom to provide all-around views of storm sewers, and produces high-quality, color recordings in DVD format with date/time stamp and digital annotation capabilities.

Inspect and record storm sewers, in either direction, at a rate not exceeding 30-feet per minute. Stopping may be necessary to properly document the storm sewer's condition. Winches, cable, rewind, and other devices must not obstruct the view or interfere with proper documentation. If the video equipment will not pass through an entire section in one direction, the Contractor must set up the equipment to enter from the opposite direction. If the video equipment fails to pass through from the opposite direction, the inspection may be considered complete at the discretion of the Engineer.

Ensure the video recording displays the date (month, day, and year) and the time (hours, minutes, and seconds). Ensure this information is displayed in upper left-hand corner of the frame. Ensure total storm sewer length, storm sewer size, and locations of sewer defects is displayed on the

upper right-hand corner of the frame.

d. Measurement and Payment. The completed work, as described, will be measured as a lump sum and paid for at the contract price using the following pay item:

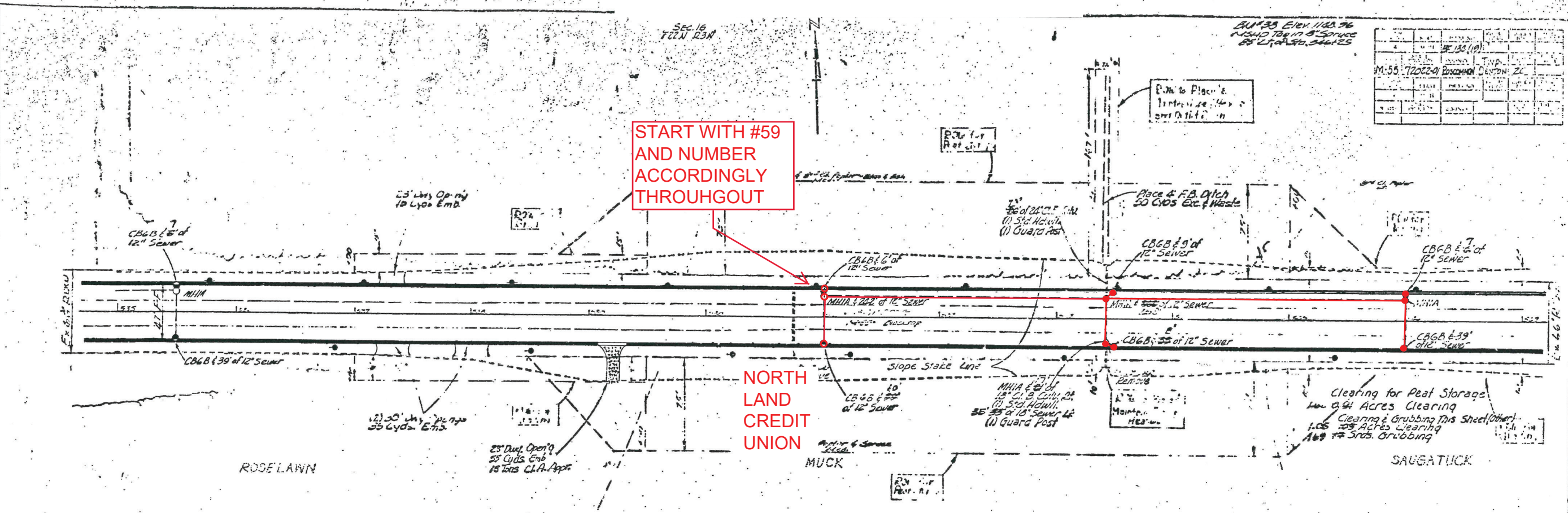
Pay Item	Pay Unit
Video Inspection of Storm Sewers.....	Lump Sum

ATTACHMENT A

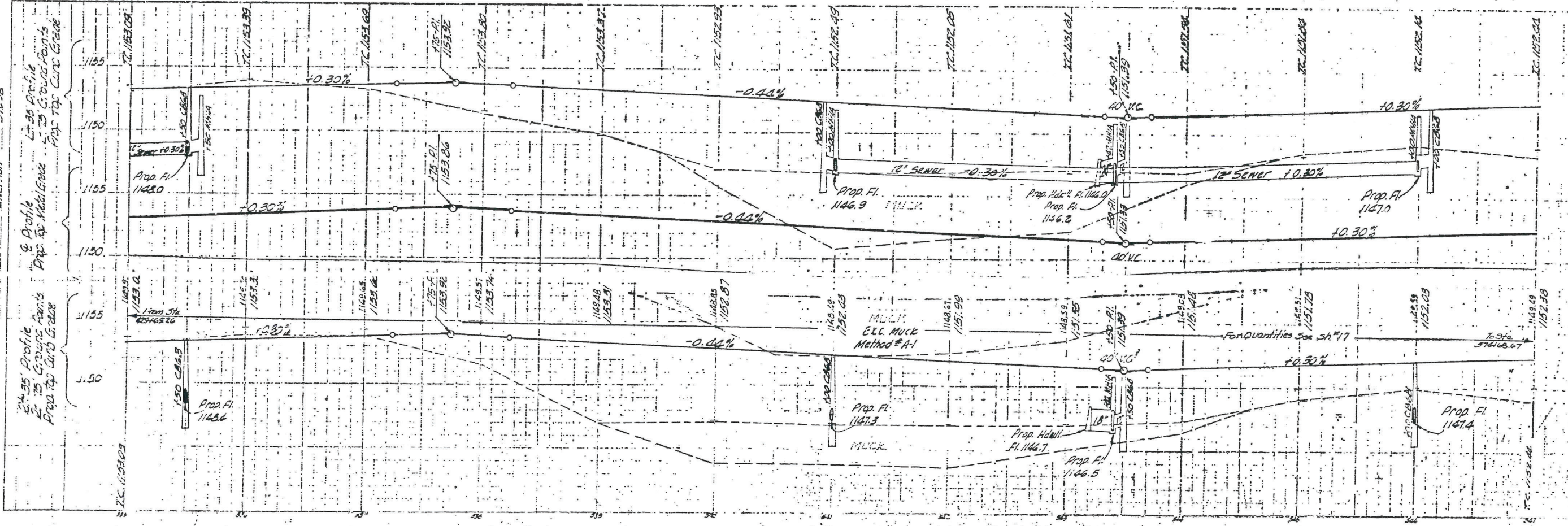
START WITH #59
AND NUMBER
ACCORDINGLY
THROUGHOUT

NORTH
LAND
CREDIT
UNION

DATE	BY	REVISION

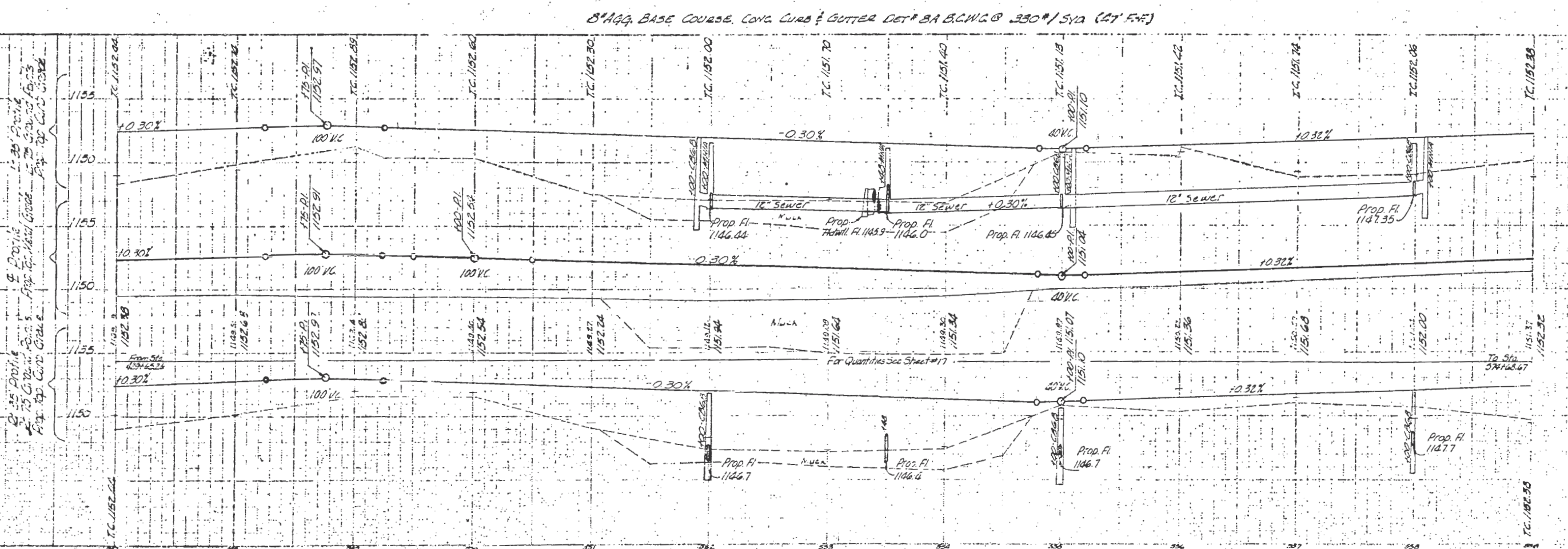
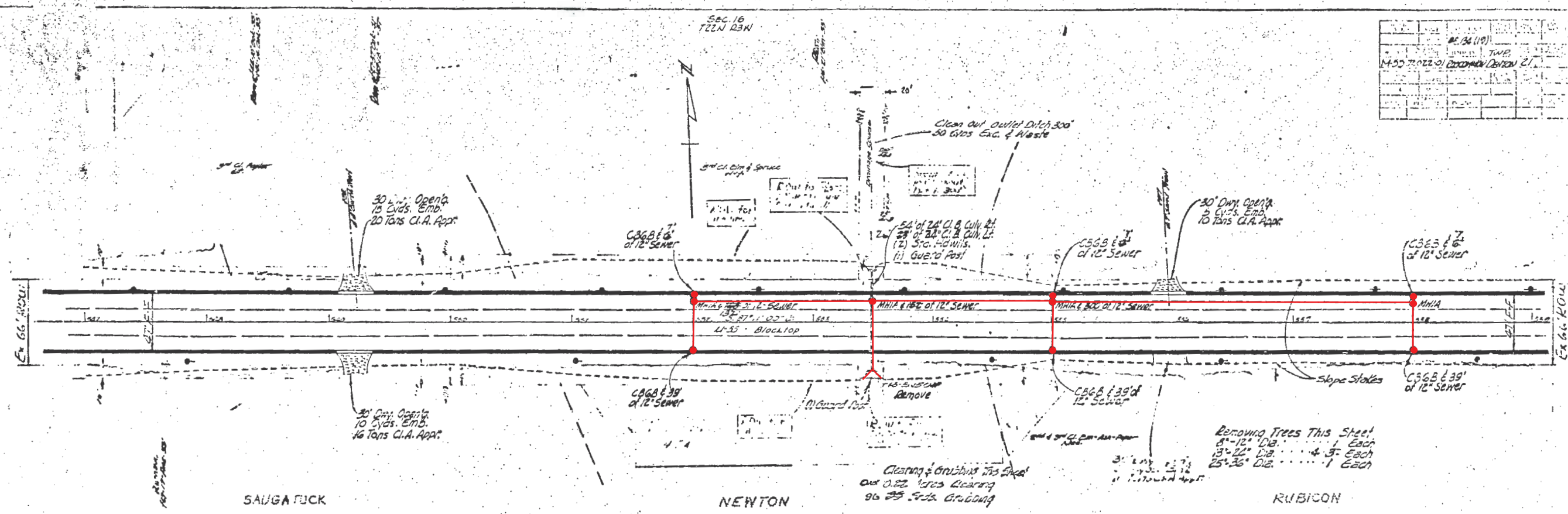


1' 8" ADA BASE COURSE, CONC. CURB & GUTTER, DET # BA & C.M.C. @ 330#/1/2" (47' F-F)



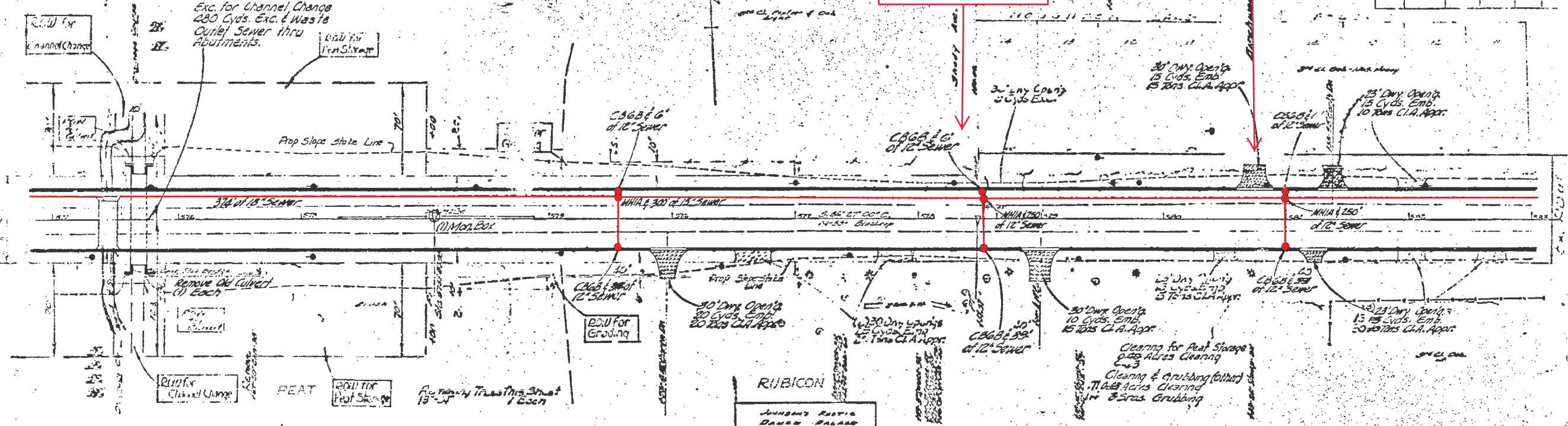
NO. 34 (19)	TWP.
N-55 7.022-01 EXHIBIT DENON 21	

DATE	1957
BY	A. Singer
PROJECT	W-26-1
SCALE	1" = 20' HORIZ.
APP. NO.	208
DATE	10-23-57
BY	L.K.



Property 1926
L.K. 3-29-59 Rev. 9-16-59
L.F. ENOM 1957

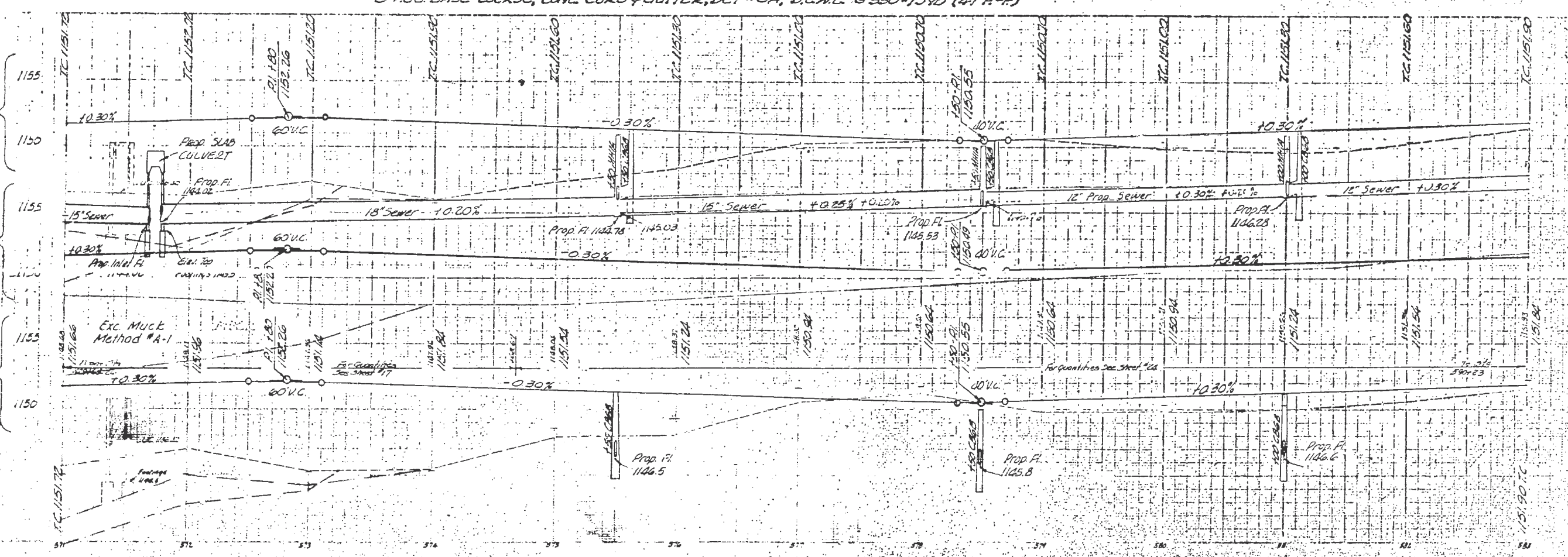
Curve Data
 $\Delta = 0.3421$
 $D = 0.25$
 $R = 38752.98$
 $T = 240.01$
 $E = 141$
 $L = 880.00$
 $M = 240.01$
 $P = 38752.98$
 $PT = 51814.37$



DATE	BY	REVISION

L.F. ENOM 1957
 J. STANLEY 1957
 J. BUCHHEIT 1957
 L. STORRE 1957
 L. FINNERTY 1957
 L. BROWN 1957
 L. VERNON 1957

Profile
 L.S. Profile
 L.S. Profile
 L.S. Profile



OTTAWA LN

MAPLE GROVE AVE

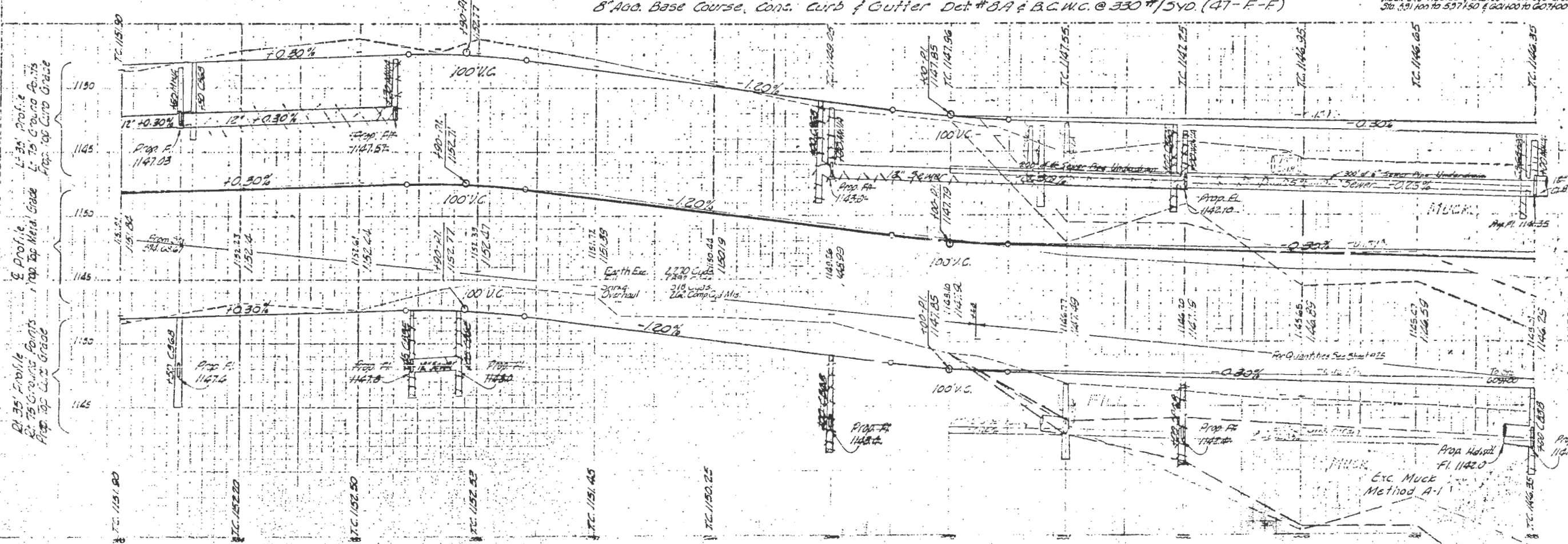
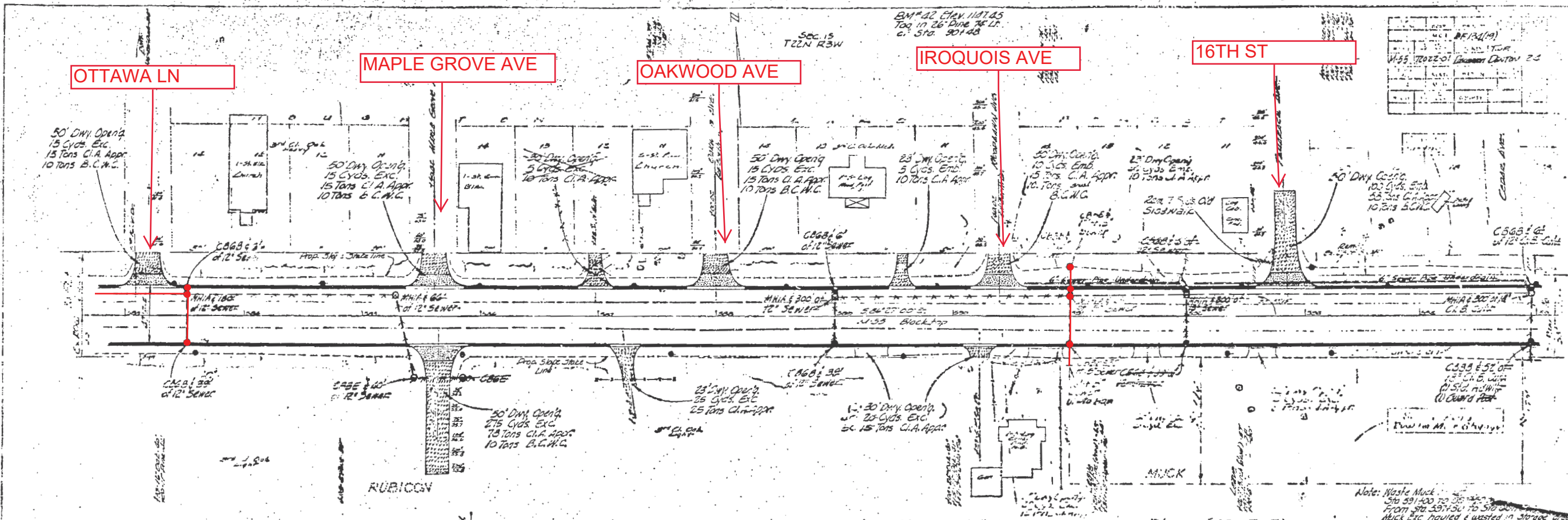
OAKWOOD AVE

IROQUOIS AVE

16TH ST

PROPERTY 150
L.K. 32859

150
155
160
165
170
175
180
185
190
195
200
205
210
215
220
225
230
235
240
245
250
255
260
265
270
275
280
285
290
295
300
305
310
315
320
325
330
335
340
345
350
355
360
365
370
375
380
385
390
395
400
405
410
415
420
425
430
435
440
445
450
455
460
465
470
475
480
485
490
495
500
505
510
515
520
525
530
535
540
545
550
555
560
565
570
575
580
585
590
595
600
605
610
615
620
625
630
635
640
645
650
655
660
665
670
675
680
685
690
695
700
705
710
715
720
725
730
735
740
745
750
755
760
765
770
775
780
785
790
795
800
805
810
815
820
825
830
835
840
845
850
855
860
865
870
875
880
885
890
895
900
905
910
915
920
925
930
935
940
945
950
955
960
965
970
975
980
985
990
995
1000

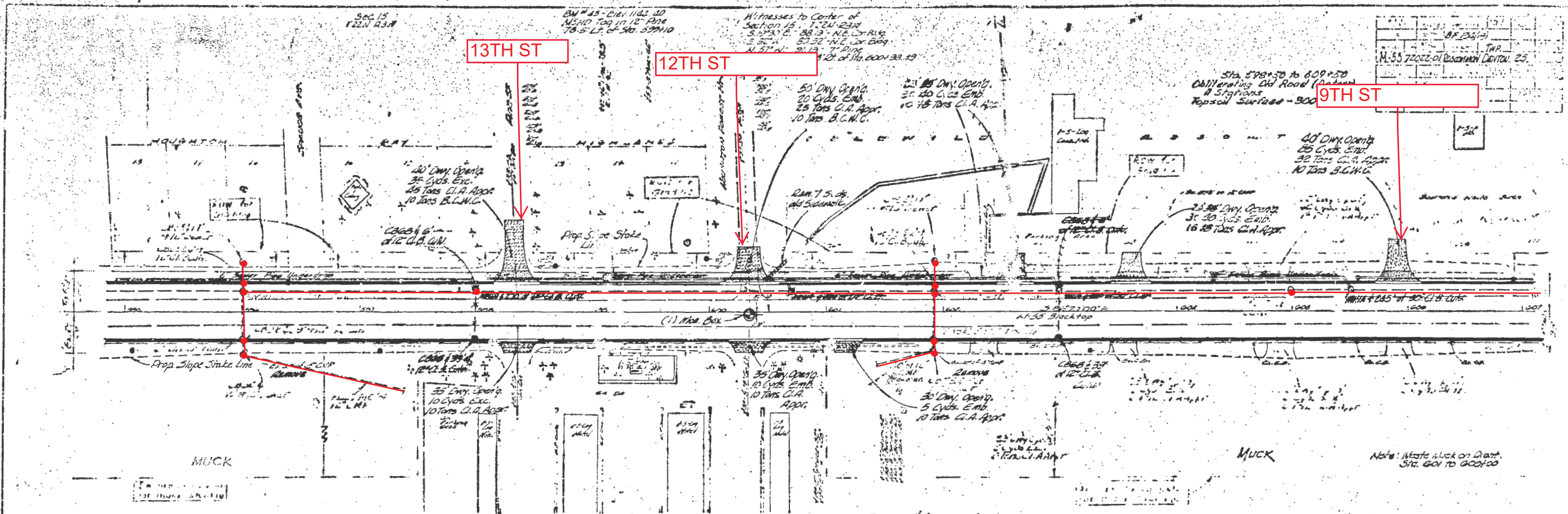


W-26-1

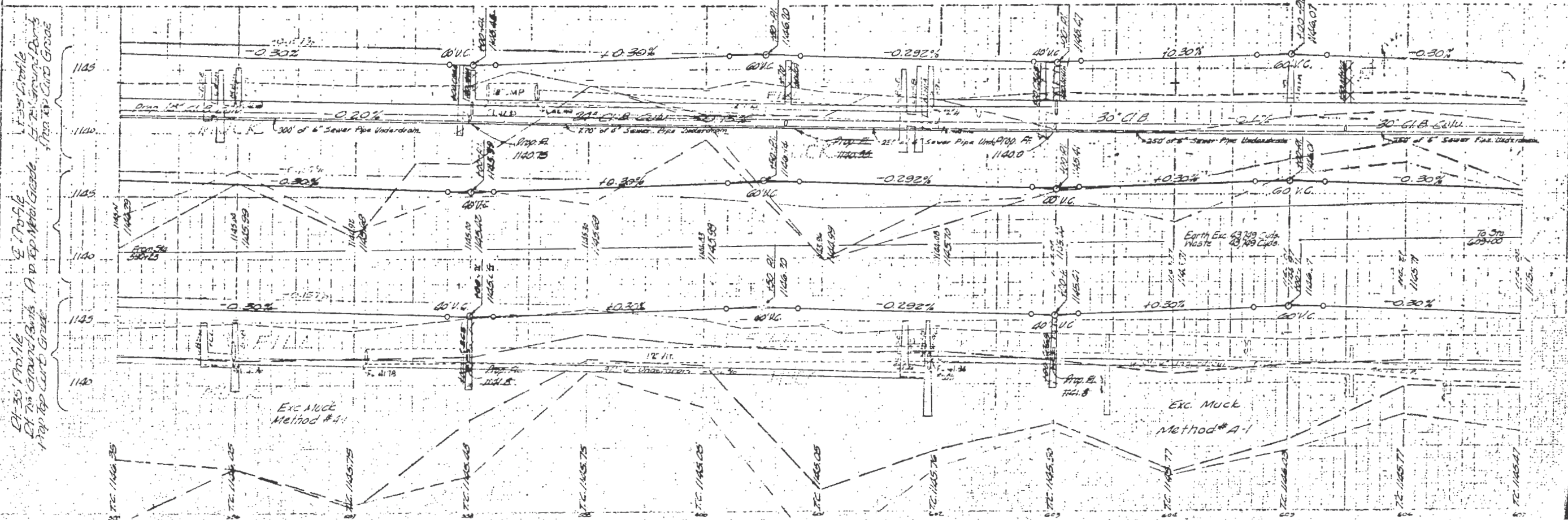
702201 BF 1/24(7) 24

Property No. 257
 L.K. 3-20-58
 L.C. 6-2-1952

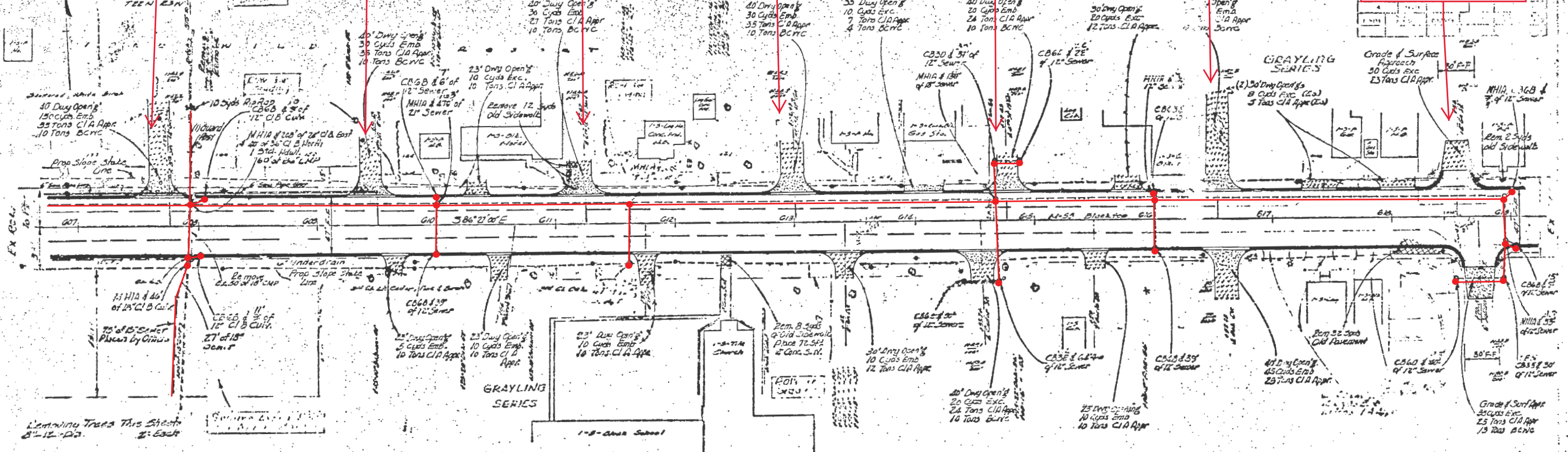
1/4 Sec. 15
 T22N R3W
 Sec. 15
 T22N R3W



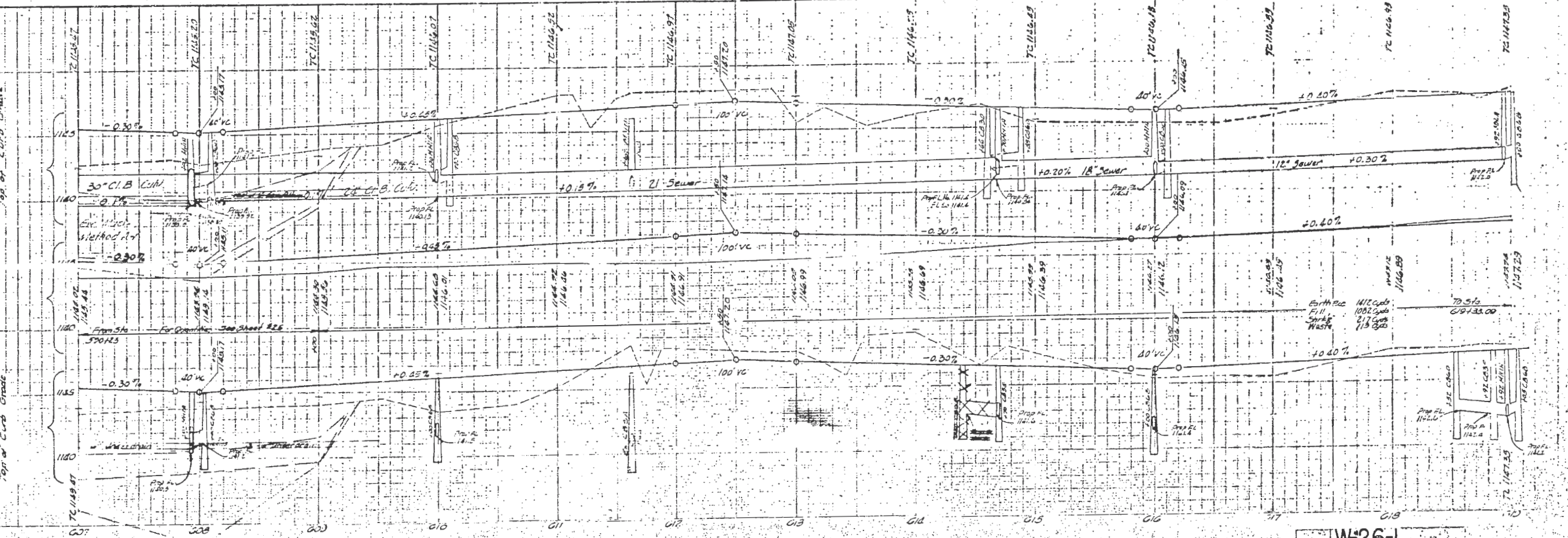
8" ASA BASE COURSE, CON. CURB & GUTTER Det # 8A B.C.N.C. @ 330#/5YD (LT. FF)



8TH ST 7TH ST 6TH ST 5TH ST FOURTH ST PARK ST IDLEWILD ST



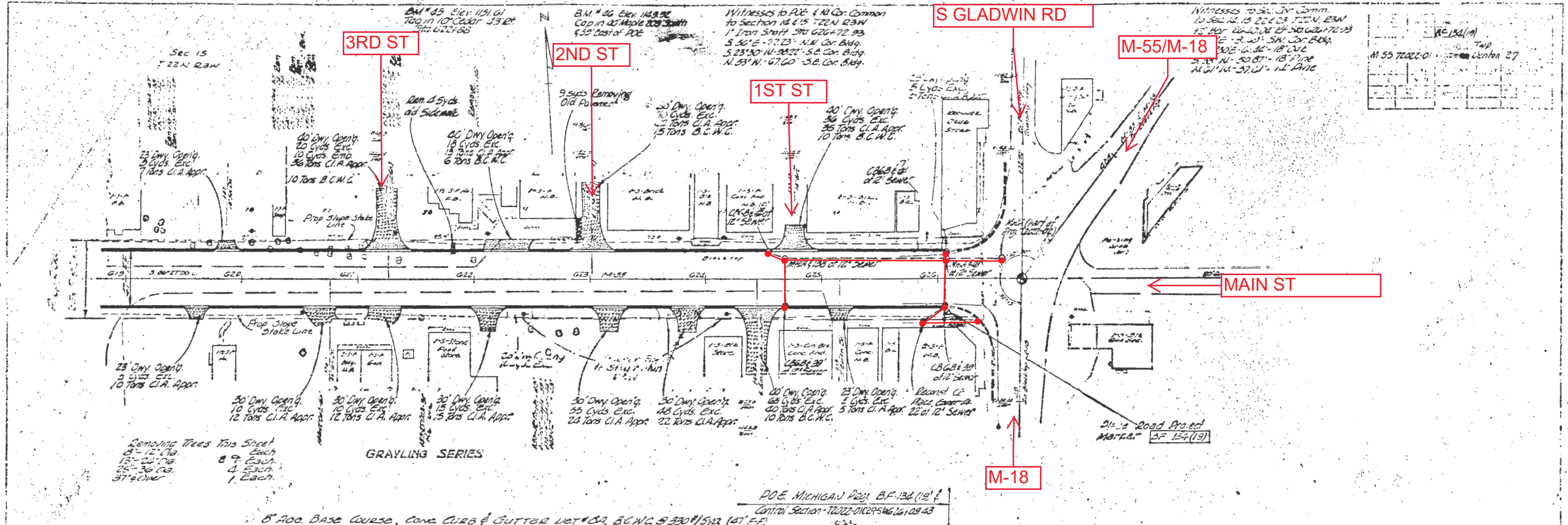
8" AGG. BASE COURSE, CONC. CURB & GUTTER 1%T# 8A. B.G.H.C. @ 350#/5.5' (4\"/>



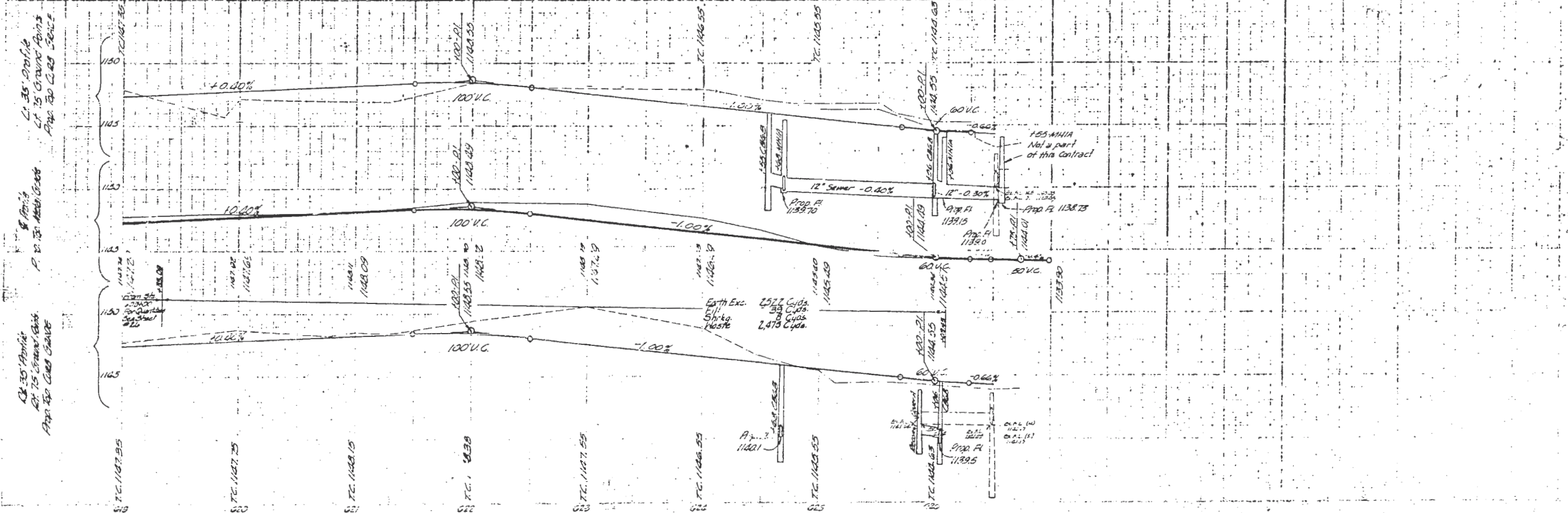
1957
 F. Fingerly
 1958
 H. Fingerly

1959
 L. Schaefer
 1957
 M. Wilson
 1957
 J. E. H. H.
 1957
 F. Fingerly
 1957
 J. B. Schaefer

L. Finger 1937
 L. Finger 1938
 L. Finger 1939



L. Finger 1939
 L. Finger 1940
 L. Finger 1941
 L. Finger 1942
 L. Finger 1943
 L. Finger 1944
 L. Finger 1945
 L. Finger 1946
 L. Finger 1947



Ch. 35 Profile
 Lt. 15 Ground Point
 Prop. 50' Curb & Gutter

Ch. 35 Profile
 Lt. 15 Ground Point
 Prop. 50' Curb & Gutter

Ch. 35 Profile
 Lt. 15 Ground Point
 Prop. 50' Curb & Gutter

SWEET PLUM AVE

APRICOT AVE

CRANBERRY AVE

GRAPEVINE AVE

ON NEXT PAGE

M-55

S GLADWIN RD

M-18/
M-55

MAIN ST

BOSCOMMON

Class A
100 Cys
To be placed as directed
by the engineer

Rem. Trees This Sheet
15-17 Do 2 each
18-24 Do 10 each
25-26 Do 7 each

1523 Lin. Ft. Sawing
Bit. Surf.

Class A Shoulders
on Transition
10 Tons

M-18

M-18

BM #46 Elev. 1149.92
MSHD 1:50 in N Foot
of 25' x 25' x 25' or 25' x 25' x 25'

Control Section	11-18 72001	Basement Center	4
Sheet No.			
Scale			
Date			
Drawn by			
Checked by			
Approved by			

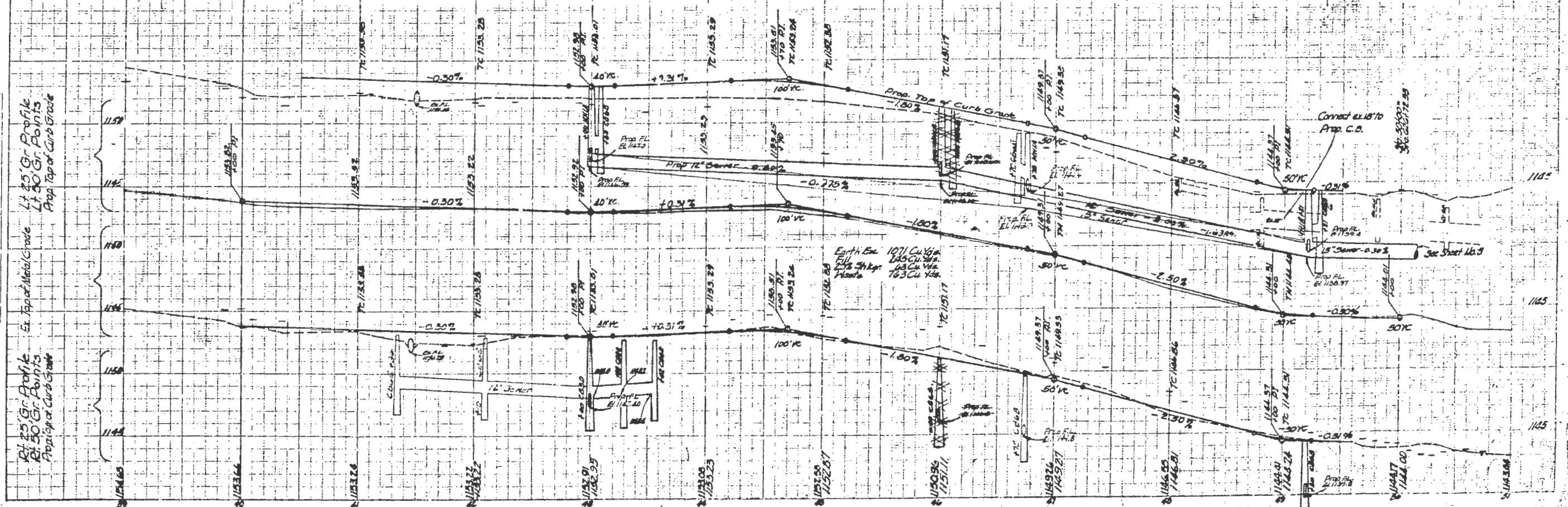
OPERATION	BY	DATE
PRELIMINARY DESIGN	W. CHASE	7-23-54
FINAL DESIGN	W. CHASE	8-10-54
FINAL CHECK	W. CHASE	8-10-54
FINAL APPROVAL	W. CHASE	8-10-54
FINAL CHECK	W. CHASE	8-10-54
FINAL APPROVAL	W. CHASE	8-10-54

OPERATION	BY	DATE
PRELIMINARY DESIGN	W. CHASE	7-23-54
FINAL DESIGN	W. CHASE	8-10-54
FINAL CHECK	W. CHASE	8-10-54
FINAL APPROVAL	W. CHASE	8-10-54
FINAL CHECK	W. CHASE	8-10-54
FINAL APPROVAL	W. CHASE	8-10-54

PLAT OF IDELWILD
REPORT NO. 1

POB Control Section 72051 C.R. Sta. 62+00
Hidden with 8" Pipe Base Case, BCWC @ 330' Layd
Curb, Curb & Gutter Det. BA (AT FF)

POE Control Section 72051 C.R. Sta. 42+30.3



W-27-3

Witnesses to P1-ROB & 1/4 Cor (Doubt Sec 140) M-55 & 1/4-18 (No Curve)
 S 75° 22' 34" W - 72.93
 N 33° 14' 31" W - 56.75 Cor. Blkg.
 S 23° 14' 31" W - 36 Cor. Blkg.
 S 30° 4' 17" W - 77.25 1/4 Cor. Blkg.
 1" Iron (Max. Box)

Witnesses to P1-ROB & 1/4 Cor (Doubt Sec 140) M-55 & 1/4-18 (No Curve)
 S 75° 22' 34" W - 72.93
 N 33° 14' 31" W - 56.75 Cor. Blkg.
 S 23° 14' 31" W - 36 Cor. Blkg.
 S 30° 4' 17" W - 77.25 1/4 Cor. Blkg.
 1" Iron (Max. Box)

Witnesses to P1-2
 Sta. 639+41.68
 N 27° 14' 59" E - 7' Elm
 S 75° 2' 09" W - 10' Elm
 N 33° 1' 50" E - 8' Elm
 1" Iron Bar (1' Deep)

Witnesses to P1-
 Sta. 625+38.89
 Due S - 33.07 - 5' Made
 S 13° 5' 04" E - 14' Oak
 S 45° 5' 48" W - 10' Oak
 1" Iron Bar (1' Deep)

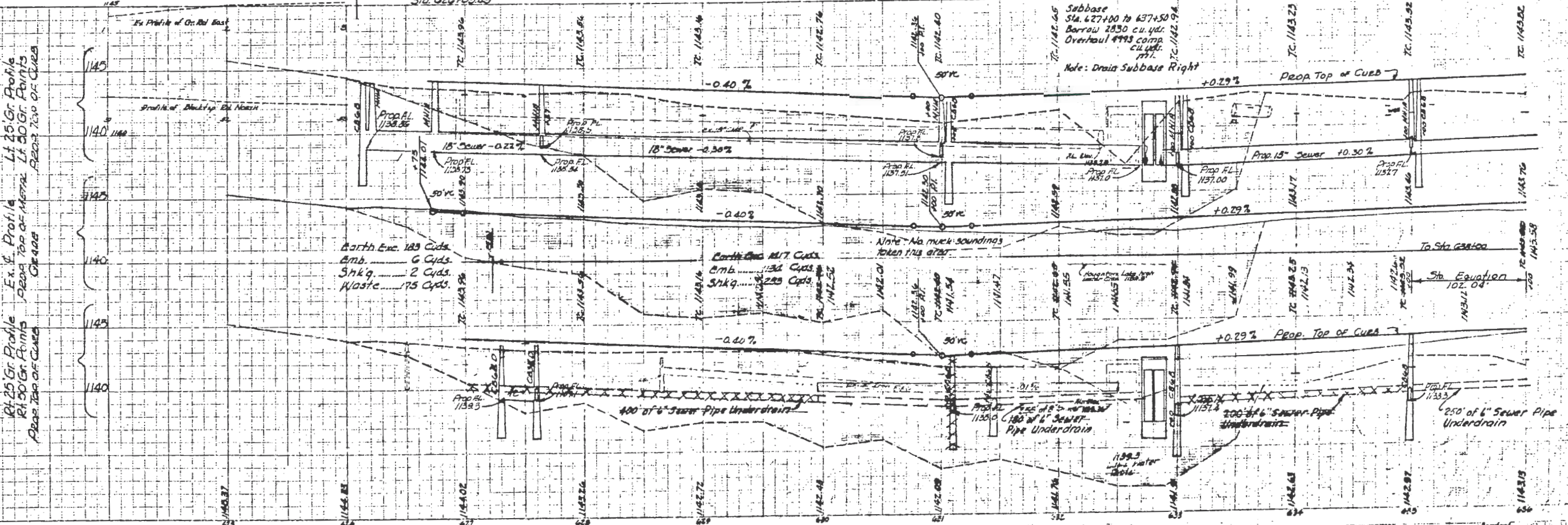
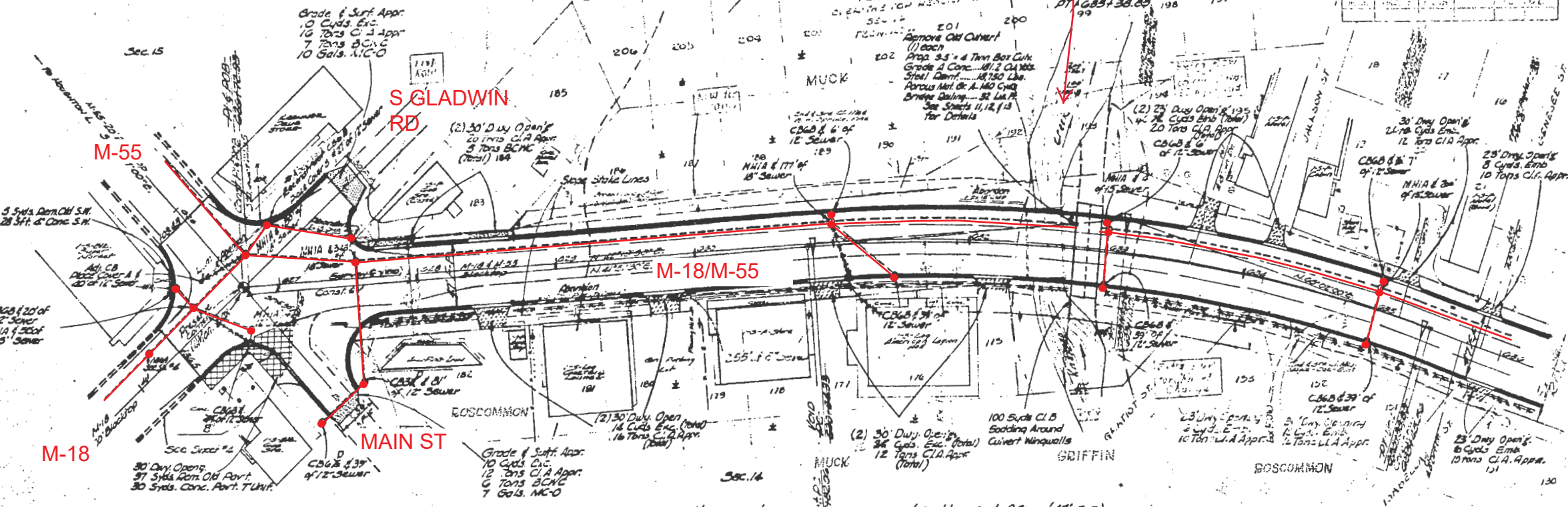
Witnesses to P1-
 Sta. 625+38.89
 Due S - 33.07 - 5' Made
 S 13° 5' 04" E - 14' Oak
 S 45° 5' 48" W - 10' Oak
 1" Iron Bar (1' Deep)

Bench Mark # 47
 MAND Top in N.
 Root of 20" Pine
 61 ft. Sta. 234+31
 Elev. 1141.45

Cleaning & Grubbing This Sheet
 .06 Acres Clearing
 10 Stds. Grubbing

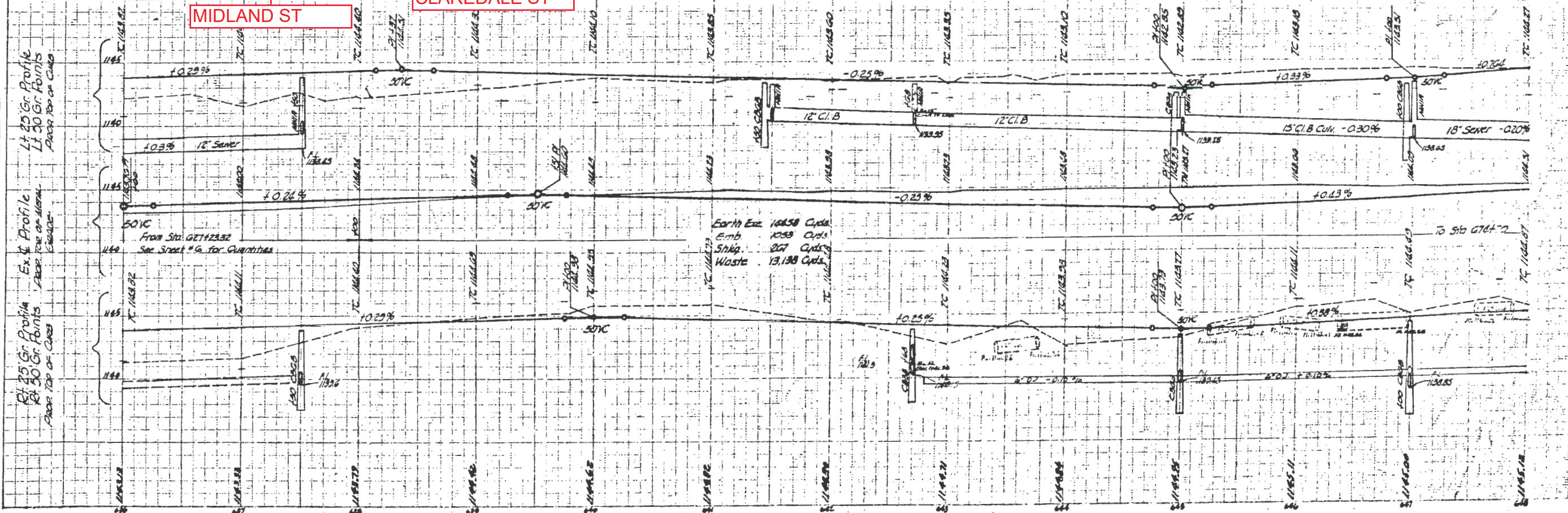
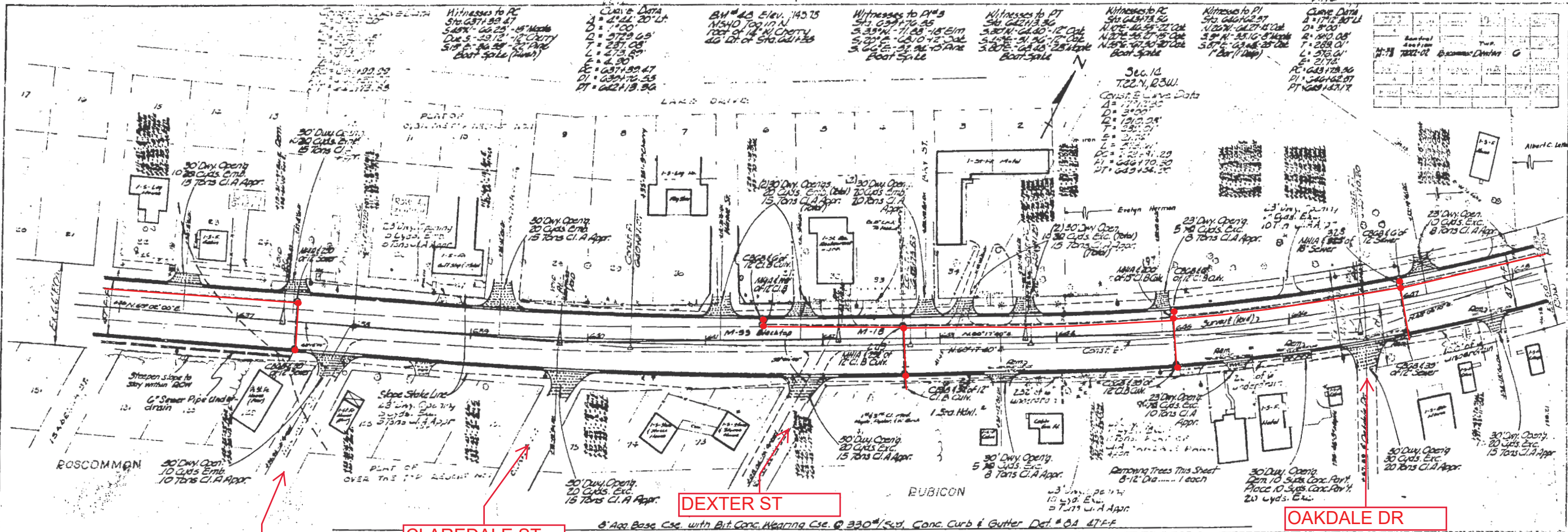
200 Side Class A Sodding to be
 placed as directed by the
 Engineer

OPERATION	DATE	BY
PRELIMINARY DESIGN	7-20-57	W. J. ...
FINAL DESIGN	7-30-57	W. J. ...
PLANNING	8-1-57	W. J. ...
CONSTRUCTION	8-1-57	W. J. ...
AS-BUILT	8-1-57	W. J. ...



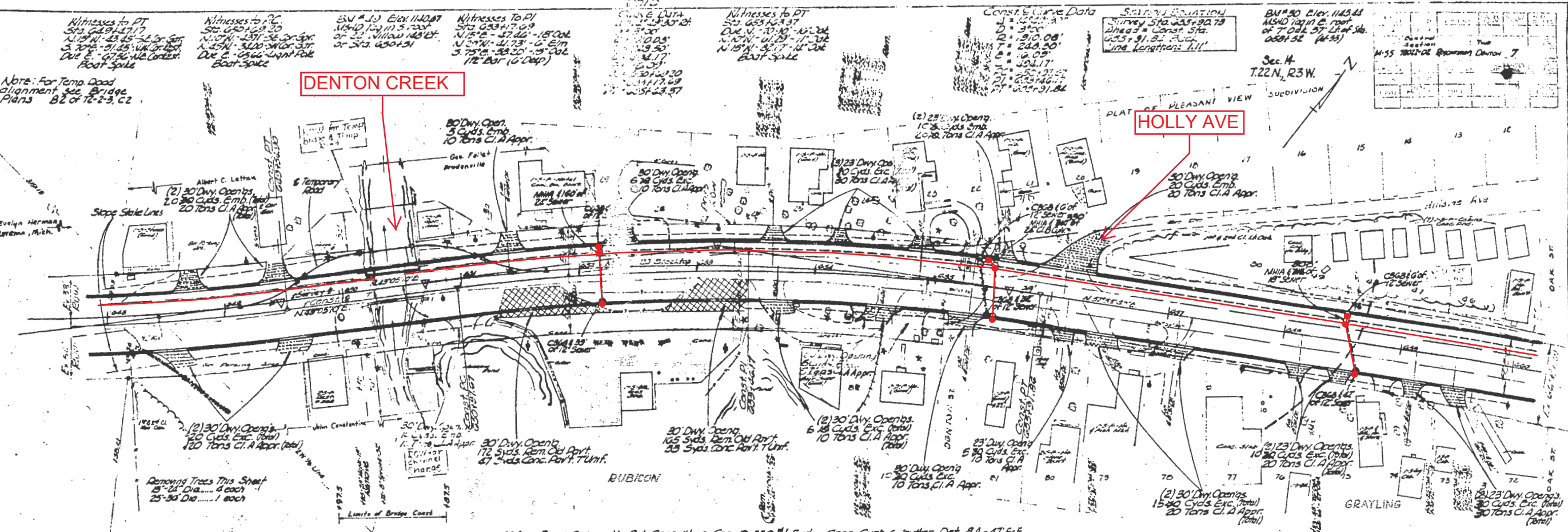
OPERATION	DATE	BY
PRELIMINARY DESIGN	7-20-57	W. J. ...
FINAL DESIGN	7-30-57	W. J. ...
PLANNING	8-1-57	W. J. ...
CONSTRUCTION	8-1-57	W. J. ...
AS-BUILT	8-1-57	W. J. ...

Station	1+00	2+00	3+00	4+00	5+00	6+00	7+00	8+00	9+00	10+00	11+00	12+00	13+00	14+00	15+00	16+00	17+00	18+00	19+00	20+00	
Profile																					



OPERATION	PRELIMINARY PLAN DRESSED
DATE	APR 18 1908
BY	W. L. K.
CHECKED BY	H. J. P.

OPERATION	FINAL PLAN DRESSED
DATE	MAY 18 1908
BY	W. L. K.
CHECKED BY	H. J. P.



REV. 8-19-88 O.O.

DATE: 12-28-88

BY: [Signature]

PROJECT: [Project Name]

SCALE: [Scale]

DESCRIPTION: [Description]

DATE: 12-28-88

BY: [Signature]

PROJECT: [Project Name]

SCALE: [Scale]

DESCRIPTION: [Description]

